

The background of the page is white, featuring several large, stylized, blue wavy lines that sweep across the frame from the top left towards the bottom right. These lines vary in thickness and color, with some showing a gradient from light blue to a darker blue. The overall effect is dynamic and suggests movement or water.

wallas[®]

marine



Looking after the well-being of boaters since 1972



Wallas is a top Finnish brand of products designed to withstand demanding Nordic conditions; they are reliable on all waters. Thirty years of experience and continuous product development have helped us in creating a range of products that emphasise both safety and reliability, the qualities valued by all boaters.

The success of Wallas is based on high-quality products and innovative product development. Our

focus is on the highly advanced design of even the smallest details of our products. Our own burner technology is the basis for Wallas stoves and heaters; it offers a wider area of power as well as extremely clean, laminar burning. The closed, balanced circulation of the combustion air, combined with non-explosive, non-pressurised fuel, guarantees safe operation.

All Wallas stoves may be equipped with a separate lid for the fan heater, which allows you to use the stove as a heater.

When designing Wallas heaters, we have paid special attention to their convenience. Warmth should be felt, but need not be heard. The Wallas is a quiet heater that runs smoothly in all types of conditions, from piercing winds to the sunny surge of wavy waters.

The craftsmanship used in production guarantees a first-rate product.





Easy, effective and safe to use – as only Wallas would offer it

Wallas stoves are equipped with step-less temperature control. You can freely move your cookware around the entire cooking range to find the most suitable temperature. You will whip up a meal in a minute; after switching the stove on, the amount of heat and cooking time correspond to that of a home stove. Just the cooking alone is an experience worth trying on a boat!

The switch for the stove and the separately installed oven switch may be placed as desired, out of reach of children for example. The diesel fuel for the stove and oven may be taken from the boat's main tank. The features of the Safe Flame 86D oven include a durable stainless steel casing, thermostat-controlled heat circulation, and a temperature indicator. Thanks to the air circulation technology, the oven bakes at an even temperature without burning the food.

Wallas stoves and ovens are

- safe
- pleasant—no humidity indoors
- easy to use
- versatile—stove serves as both stove and heater

The new 85D ceramic stove

The Safe Flame 85D represents the apex of technology in its field. It is a flat, submersible stove which operates with diesel fuel. It includes top features such as elegance, convenience and safety.



The operating switch may be installed both horizontally and vertically.



The red light warns you of a hot burner.



The edges of the stove raise just 2 mm from the surface of the table. There are no visible screws.



You can conveniently make toast while at the same time boil water for tea on the other burner.



The pot holders have a separate anti-slip bracket to which the easily adjustable holders may be attached.



A unique combination of stove and heater

The unit functions as a stove when the lid is lifted, but when the lid is closed, the blowers inside it activate and blow the heat from the burners into the cabin. All stove models may be equipped with



a lid, which may even be installed at a later time. The wooden handle makes it nice to grip onto.

Stoves and ovens



Wallas 85DU		
900-1900 W	0,19 A	D
0,09-0,19 l/h	12 V	



Wallas 85DP			12 V
900-1900 W	0,19 A	D	
0,09-0,19 l/h			



Wallas 86D		
1000-2500 W	1,6 A	D
0,1-0,25 l/h	12 V	



Wallas 87D		
85D 900-1900 W	1,6+0,19 A	D
86D 1000-2500 W	12 V	
0,09-0,44 l/h		



Wallas 800		
650-1200 W	0,15 A	P
0,07-0,13 l/h	12 V	



Wallas 90		
700-1800 W	0,15 A	P
0,08-0,19 l/h	12 V	

Gimbal brackets Heat blower lid

P Paraffin oil-operated

D Diesel-operated



The Skipper's Feta Salad

Arctic lettuce
Feta cheese, cubed
Tomatoes
Olives
Onion
Olive oil
Black pepper
Watermelon
Fish fillet

Thinly slice onion and cut the tomatoes into wedges. Tear lettuce into small pieces and mix with the rest of the ingredients and olive oil. Dish the salad out onto plates, top with freshly ground pepper and decorate with sliced watermelon. For a more filling salad, fry a fish fillet for each portion.





Nautic heaters



Nautic 30D		
1000-3000 W	1,0-1,9 A	D
0,1-0,3 l/h	12 V	
vent max. 113 m ³ /h	heat max. 143 m ³ /h	

The 30D heater takes the air to be heated from the surrounding area. The 40D heater takes the air to be heated through air hoses allowing for installation in the engine compartment, for example. NB: the amount of power needed for the heating unit depends on the width of the boat and how well it is insulated, as well as operating conditions such as water temperature, the length of the



Nautic 40D		
1300-4000 W	2,0-3,9 A	D
0,13-0,4 l/h	12 V	
vent max. 141 m ³ /h	heat max. 178 m ³ /h	

boating season, the total length of the air hoses and the thermal insulation of the hoses.

Wallas heaters

- quiet
- easy to install
- efficient—use little energy
- made of stainless steel



30D, 40D

Wallas' unique control system with information display (Info Control Panel) includes the following functions:

Timer: the heating unit can be set to switch on up to 31 days in advance, and the time the unit is on may be set from 0-24 hours.

Temperature indicator and thermostat control for the cabin: the thermostat is located inside the information control panel. Adjusting the heat manually is also possible.

Versatile operating details: the information display clearly indicates currency consumption (A), fuel consumption (l/h), temperature of burners, operating hours, battery voltage and status. It also indicates when the unit needs maintenance as well as disorders caused by the environment.



30D, 40D



1300



1800, 2400, 3200

Classic heaters



Wallas 1300		
1200 W	0,4 A	P
0,13 l/h	12 V	
	heat max. 50 m ³ /h	



Wallas 1800		
950/1700 W	0,35/0,5 A	P
0,1/0,18 l/h	12 V	
vent max. 68 m ³ /h	heat max. 85 m ³ /h	



Wallas 2400		
950/2300 W	0,5/1,3 A	P
0,1/0,24 l/h	12 V	
vent max. 86 m ³ /h	heat max. 109 m ³ /h	



Wallas 3200		
1500/3000 W	0,9/1,9 A	P
0,16/0,32 l/h	12 V	
vent max. 116 m ³ /h	heat max. 146 m ³ /h	

The operating switch and indicator light on the Wallas 1300 are located at the end of the unit; on other models, they are located in a separate control box (available as an accessory for the 1300 model). The switches on models 1800, 2400, and 3200 may be optionally set at full, half, or partial power, as well as fresh air ventilation. There are two switch options for controlling heat with the Nautic Diesel

models: manual adjustment with the Basic Control Panel and the Info Control Panel of which there is a separate presentation. In addition to heating, fan circulating air keeps the boat fresh and mildew free.

Compatibility of the heaters:

1300 Blower lids	1800 2400	30 D 3200	40 D
• One spacious cabin or control cabin (HT boats)	• 6-8 m boats	• 8-10 m boats • 30D boats with diesel engine	• 9-12 m boats • for installation in engine room • boats with diesel engine

Fresh air circulation


Paraffin oil-operated

Diesel-operated

Heat blower lids



240 + 107	(85DP)	
900-1900 W	0,28 A	12 V



240	(85DU)	
900-1900 W	0,28 A	12 V



25 + 106	(90)	
700-1800 W	0,4 A	12 V



220	(800)	
650-1200 W	0,4 A	12 V



Gimbal brackets

Accessories



The hull and deck ducts are of high quality. Insulating the warm air hoses is recommended to minimize heat loss. Hoses different in diameter may be connected using adapters (60-75-90 mm).



The extra blower (3415), which can be steplessly adjusted, may be used to direct more heat to a specific location (e.g. for exceptionally long warm-air hoses).



The cabin thermostat, which does not switch off the heating unit (the minimum temperature is the minimum output of the heating unit) is available for models 1800, 2400, 3200, 30D (Info Control Panel), 40D (Info Control Panel).



The low-lying, 10-litre special tank may be fitted to various storage compartments in the boat. A fuel filter is a standard accessory for the stationary tank installation set.



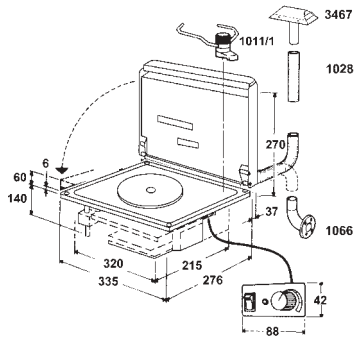
Gimbal brackets are available for models 85DP, 86D, and 87D. Pot holders are available for all models.



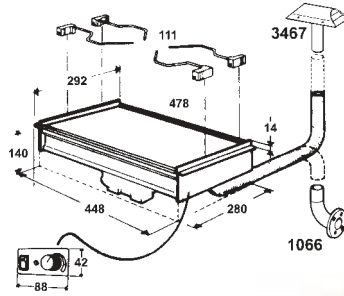
10		
100 Pa	0,3 A / 0,6 A	
15 l/s (50 m³/h)	12 V	
💡 0,4 A		

Range hood: two speeds, light, quiet and efficient.

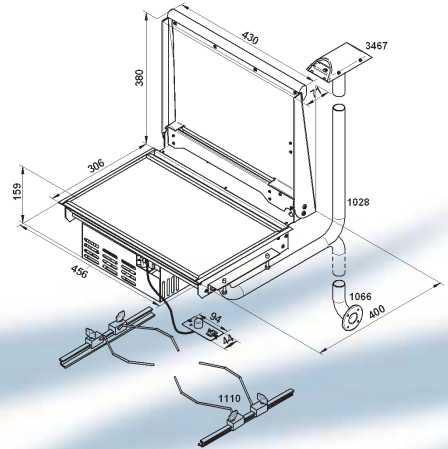
Dimensions and Mounting Accessories



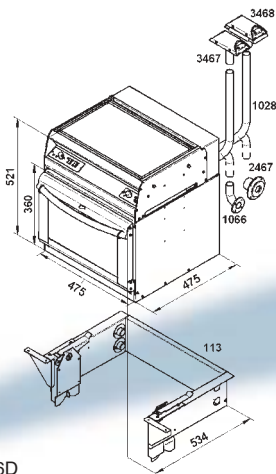
Wallas 800 + 220



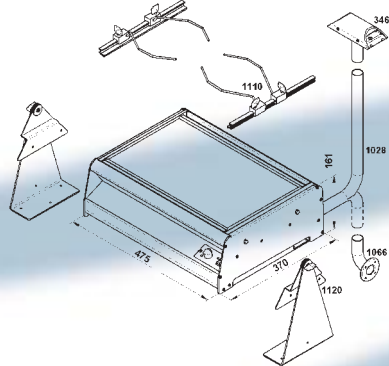
Wallas 90



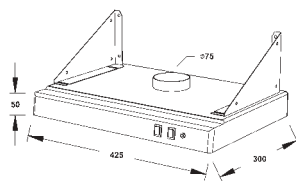
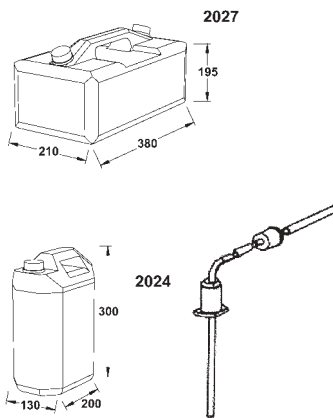
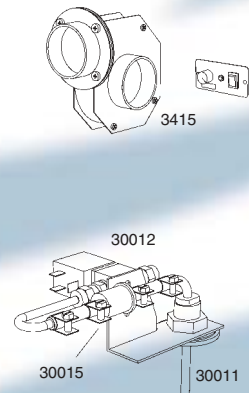
Wallas 85DU + 240



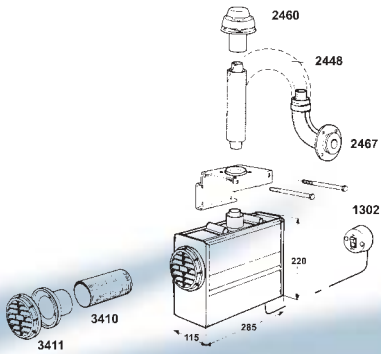
Wallas 86D
Wallas 87D



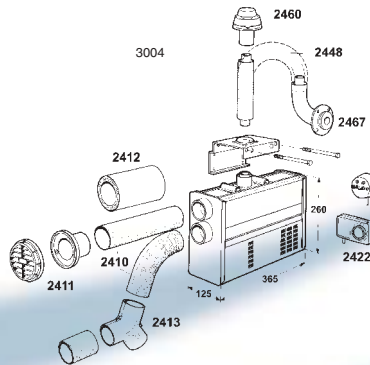
Wallas 85DP



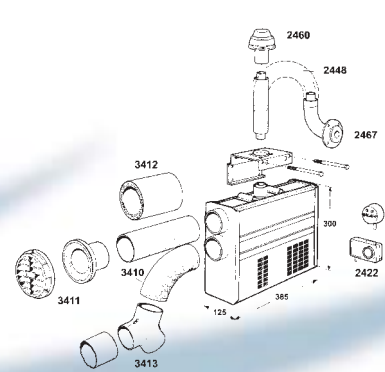
Wallas 10



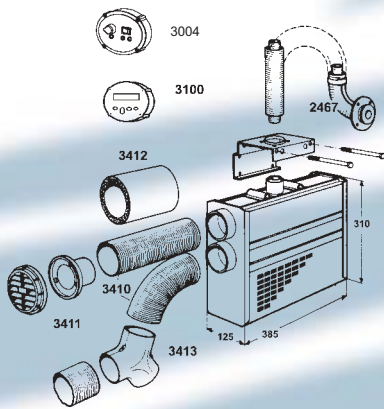
Wallas 1300



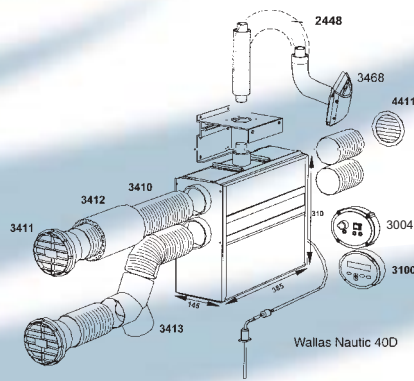
Wallas 1800, 2400



Wallas 3200



Wallas Nautic 30D



Wallas Nautic 40D

You will need the following accessories for mounting:

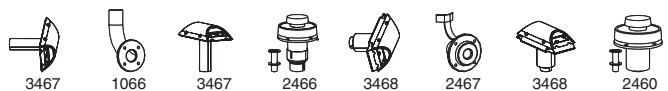
	Heaters	Stoves and ovens
Exhaust duct	●	●
Exhaust hose	●	●
Warm-air hose	●	
Outlet vent	●	
Fuel tank or fittings for a fixed tank	●	●
Diesel heaters with Info Control Panel or Basic Control Panel	●	

Maximum dimensions

Model	Fuel hoses separate tanks (m)	Fuel hoses Fixed tanks (m)	Exhaust hose (m)	Warm air hoses m/o
800	2		5	
90	2		5	
1300	2		0,4	1/75mm
1800	2		2	2x5/60mm
2400	2		2	2x8/60mm
3200	2		2	2x8/75mm
85D		4+4	4	-
86D		4+4	4	-
30D		4+4	2	2x8/75
40D		4+4	4	2x8/75

Compatible exhaust fittings

3467, 1066, 3467, 2466
3467, 1066, 3467, 2466
3468, 2467, 3468, 2460
3468, 2467, 3468, 2460
3468, 2467, 3468, 2460
3468, 2467, 3468, 2460
3468, 2467, 3468, 2460
3468, 2467, 3468, 2460
3468, 2467, 3468, 2460+2069





wallas[®]

Manufacturer: Wallas-Marin Oy, Kärrikatu 4, 20780 Kaarina, Finland
Tel. +358 (0)2 412 0500, Fax. +358 (0)2 412 0510. www.wallas.com