

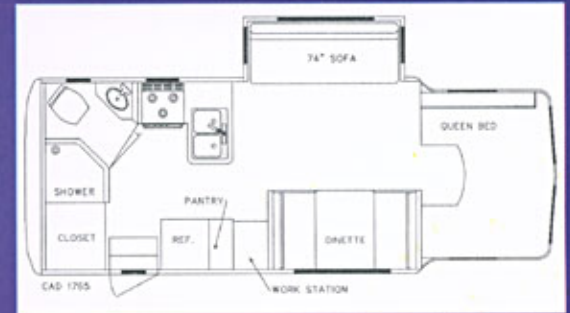


# Xcursion - Ford



- 4-wheel drive
- Powerstroke 7.3L diesel
- Power-slide (30") w/awning
- Closed circuit rearview TV
- Solar battery charger

*For a complete list of specifications, features and options, see back panel.*



# Ford - Xcursion



## SPECIFICATIONS, FEATURES, AND OPTIONS

### DIMENSIONS

Exterior length .....	26.5'
Wheelbase .....	165"
Exterior width .....	96 <sup>3</sup> / <sub>4</sub> "
Exterior height .....	11' 3.5" (top of A/C)
Interior height .....	6' 4"
GVWR .....	15,000 lb
Ground Clearance: Rear Axle .....	8"

### CHASSIS-Ford F-550 Chassis Cab

Ford 5.4L 3-valve Triton V8 or 6.8L V10  
6.0L Power Stroke V8 Turbo Diesel ●  
Transmission - TorqShiftx 5-speed auto  
Fuel capacity - 40 gallons  
Chrome bumpers (Front)  
Chrome grill with halogen headlights  
Radial tires, 225/70R x 19.5F All Season  
Dual wheels W/S.S. liners  
Axle Ratio 4.88  
Remote keyless entry system  
Front air dam  
4-Wheel drive ●  
Air bag on/off switch-passenger  
Brakes - 4-wheel anti lock  
Battery - 750 amp maintenance free  
Alternator - 95 amp  
Spare tire & wheel

### EXTERIOR BODY

Color - White with three tone graphics  
Aluminum frame body w/fiberglass exterior  
Floor - aluminum frame, plywood and carpet, aluminum under  
Insulation - sidewalls & roof, spray foam R-18  
Rustproofing - all metal components  
Aerodynamic fiberglass roof - seamless  
Slider & awning type windows, safety glass tinted with screens  
Large mirrors  
Wide fiberglass running boards with wide wheel flares (front wheels)  
Porch light 12V - 2  
Front/rear clearance lights, D.O.T. approved  
Awning 13' ●  
Electric Step  
Entrance door 6' 8" w/screen door  
42 cu. ft. exterior storage  
Closed circuit rearview TV ●  
Deluxe assist entrance door handle  
Trailer Hitch, Class III ●  
Firestone Ride-Rite Pump & Control Stabilizer/Leveler jacks (2)

### DRIVING COMPARTMENT

Privacy curtain behind front seats  
Deluxe highback seats w/arm rest  
Tinted glass windshield and front doors  
Power windows & door locks  
Air conditioner-automotive dash mounted  
Tilt steering wheel  
Steering and brakes - power assist  
Cruise control  
Pass through access to motor home  
AM/FM radio, cassette/CD/equalizer/  
6 speakers and clock radio  
Radio, C.B., 40-channel ●  
Heater - automotive, fresh air

### INTERIOR

Colors - 3: blue, sage green, brown  
Walls vinyl wallpaper over luan  
Ceiling vinyl wallpaper over luan  
Fantastic Vent, thermostat/rain sensor  
Fabric blinds/Curtains w/valance - side windows  
Draperies front overhead area windows  
Plush carpeting  
Fluorescent lights w/remote switches  
Deluxe drawers  
Overhead cabinets w/hold open doors  
Full length closet  
6' 4" standing room  
White laminated cabinets w/raised panel doors and drawers  
Oak cabinets w/raised panel doors and drawers ●  
Entertainment center-front overhead ●  
Entertainment center-front overhead w/ twin bed (slide out) ●  
Power-slide (30") w/awning ●

### KITCHEN

Microwave/Convection oven w/exhaust fan and light  
Stove, LP gas with 3 burners (rear bed - 2 burner)  
Refrigerator, 8cu. ft. 3-way, 12/120v/ LPG automatic-manual energy selector (rear bed-6.3 cu. ft. 2-way 12/120v)  
Sink cast acrylic  
Hot and cold water faucet  
Sink, filler/cutting board  
Countertop, color laminated mica  
White laminated cabinets  
Metal mini blind on kitchen window  
Linoleum floor  
Pullout pantry with removable baskets (rear bath floor plan)  
Custom made monitor panel  
Fire extinguisher  
Pantry/Linen closet (rear bed floor plan)

### SLEEPING

Sofa/bed 75" x 45"  
Front overhead bed 76" x 60"  
Dinette 75" x 25"  
Double bed floorplan 76"x54"

### BATHROOM

Neo-angle shower w/folding doors, wand - single control, water saver, push button type w/flexible hose  
ABS wash basin  
Toilet - marine flush  
Power vent fan  
12v lights  
Solid bathroom door  
Window - obscure  
Linoleum floor  
Make-up cabinet and mirror

### HEATING/COOLING

Furnace, LP gas, 25,000 BTU, forced air thermostatically controlled  
LP gas tank, 16 1/2 gals. (60 lbs.) 80% safety stopfill valve  
Air conditioning, 13,500 BTU w/ceiling ducts  
LP gas detector  
Smoke detector  
Carbon monoxide detector

### ELECTRICAL

12V and 120V  
Power plant - ONAN 4000 watt, air cooled, remote start (or 3600 watt-LPG)  
Power plant - KUBOTA 3500 watt diesel (exchange) ●  
Lighting, interior, 12V  
Outlets, 5 interior, 1 exterior 120V  
Exterior inlet, 30 amp, 120V, weatherproof  
30 foot shoreline cord  
Convertor, 45 amp  
Battery charger meter  
Dual auxiliary batteries, 80 amp w/isolator  
TV, color, 13" combo  
TV antenna with amplifier  
Solar battery charger ●  
Cable TV-phone hook-ups  
12V disconnect switch - house batteries

### WATER

Automatic pressure type, inside motor home  
Fresh water tank, 36 gallon, polyethylene plastic  
Hot water heater, LP gas, 6 gal. capacity with motor-aid heat exchanger-with by-pass  
Water pump, demand type, 12V automatic  
Holding tank, grey water, 19<sup>1</sup>/<sub>2</sub> gallon - heated w/remote termination drain valve  
Holding tank, black water, 19<sup>1</sup>/<sub>2</sub> gallon - heated w/remote termination drain valve  
City water hook-up, outside  
Termination hose carrier  
Exterior shower  
Locking water fill door

### All Features Standard-

- Denotes available options
- ❖ Specifications, standard & optional equipment subject to change without notice

## XPLORER MOTOR HOMES

owner: **Bob Helvie**

office: **574-293-1775**

fax: **574-295-1880**

email: **sales@startracks.org**

**www.xplorermotorhome.com**

